

## CLCS/Art 120: The Vassar Campus

Yvonne Elet

### Itinerary: Noyes House

In this class meeting, we will continue our consideration of two threads; housing/dorm life, and architectural style – in this case, modernism. Our focus will be on Noyes House, designed by Eero Saarinen (who also drafted some unexecuted campus masterplans.) Saarinen noted that “On existing campuses there is the challenge of building proud buildings of our own time that are in harmony with the existing architecture and the outdoor space.” Walk around the exterior of Noyes; how did he do that? Consider the plan, forms, materials, and details. How do the front and rear facades differ – once again, which is which? How does this building reflect the characteristics of modern style that John McAndrew espoused? At the same time, how does it relate to earlier places on campus?

I’m unclear whether you are currently supposed to visit houses other than your own on campus. If not, please confine your observations to the exterior of Noyes. If you are allowed to enter the building, please do. Saarinen conceived Noyes as a total work of art, encompassing exterior, interior, furniture, fittings, textiles, china, and silverware. How is this still evident – or is it? How do the exterior and interior relate to each other? If you sit in the Jetsons Lounge, what is your relation to the building, and the landscape?

FIGURE 3.17 Typical plan of the upper floors (1958).

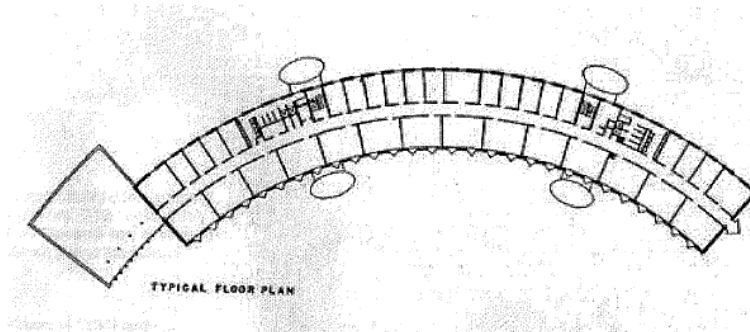
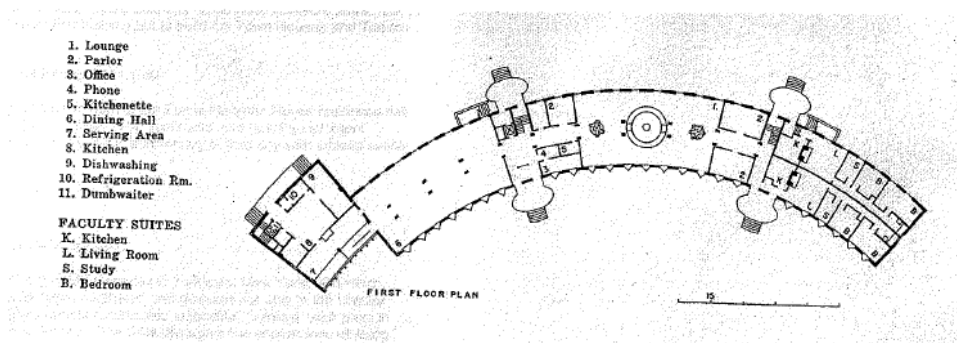


FIGURE 3.10 Ground floor plan (1958).



Reproduced from Vanessa Beloyianis, “Eero Saarinen at Vassar College (1954-1958), B.A. Thesis, Vassar College, 2008 [advised by Nicholas Adams].